

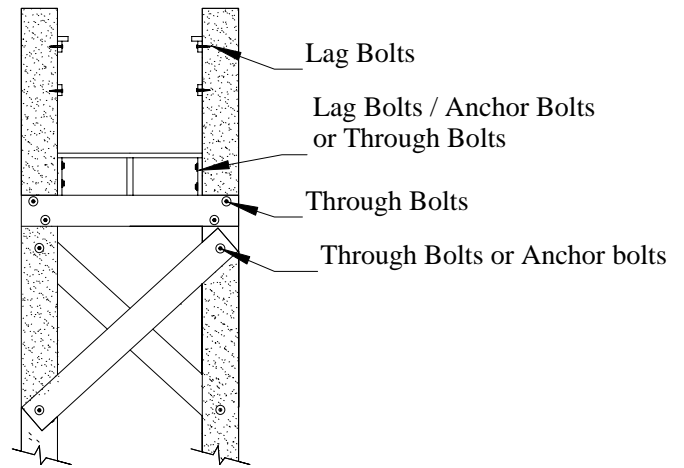
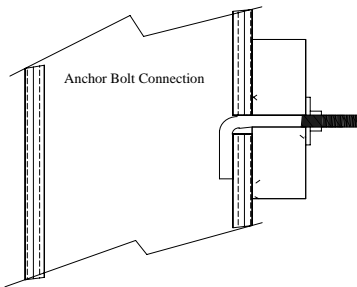
Attachment and Assembly Data



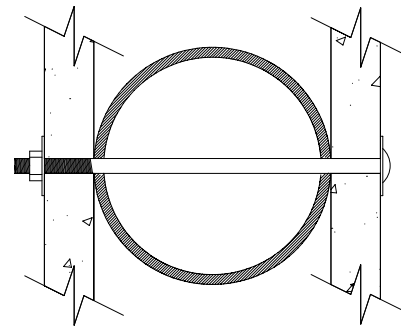
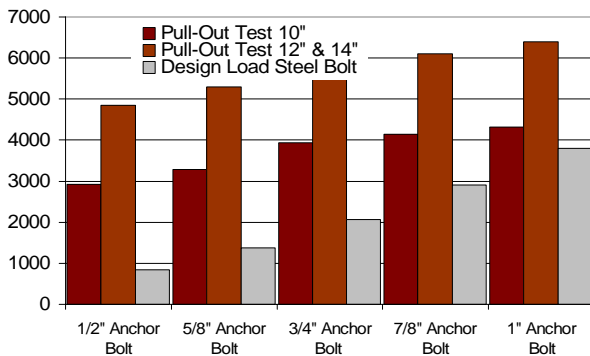
Due to the three dimensional fiber architecture of Pearson Pilings fiberglass reinforcements, through-bolts and anchor bolts are all used for various installations and applications. Even lag bolts can be used for non-structural fastening.

Anchor Bolt and Through Bolt

The holding and pull-out strength of bolted connections to the composite pile typically exceed the operating load recommendations for galvanized bolts as shown below. Structural cross members, beams, boat lifts and ramp hardware should be attached using either anchor bolts or through bolts.



Anchor Bolt Pull-Out in Pearson Pilings (lbs.)

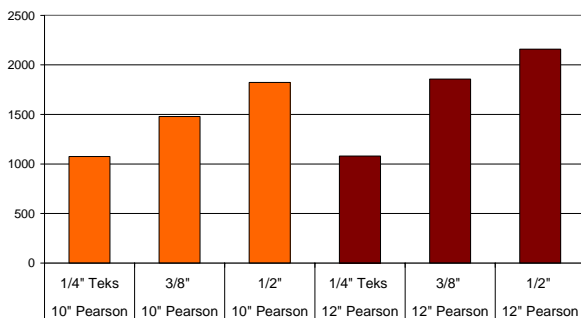


Through Bolted Connection

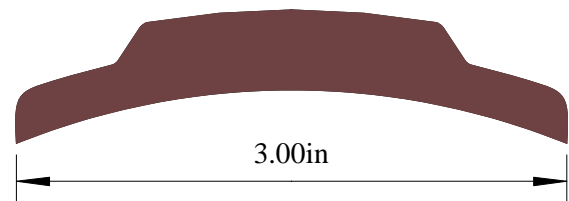
Lag Bolt

Lag bolts may be used for non-structural connections and fitting of cleats, line holders, hand rails, fenders, ladders, benches and lighting fixtures. 1/4" Tek screws should be used for attaching pile caps – most self tapping screws will work, but avoid those with flanges on the drill section.

Galvanized Lag Bolt Pull-Out Pearson Composite Piles (lbs.)



Rub Rail



The Pearson Rub Rail is used to prevent wear on the surface of the pile due to float hardware and hoop chafing, and is durable enough for use on large boat fendering piles. It is attached via #12 self-tapping screws or wood screws with pilot holes.